

ISSUE	ALTERATIONS	DRAWN	APP'D	MOD No.	DATE
1	FIGURE 1 ADDED	SB	S BROWN	A4828	15.3.00
2	PRODUCT VARIANTS ADDED	SB	S BROWN	A5120	27.7.00
3	"OUT" & "IN" REMOVED FROM +VE LINE	SB	S BROWN	A5215	5.9.00
4	CLEAN CONTACT NOTE ADDED	P.Garnett	NH	A7858	26-6-03

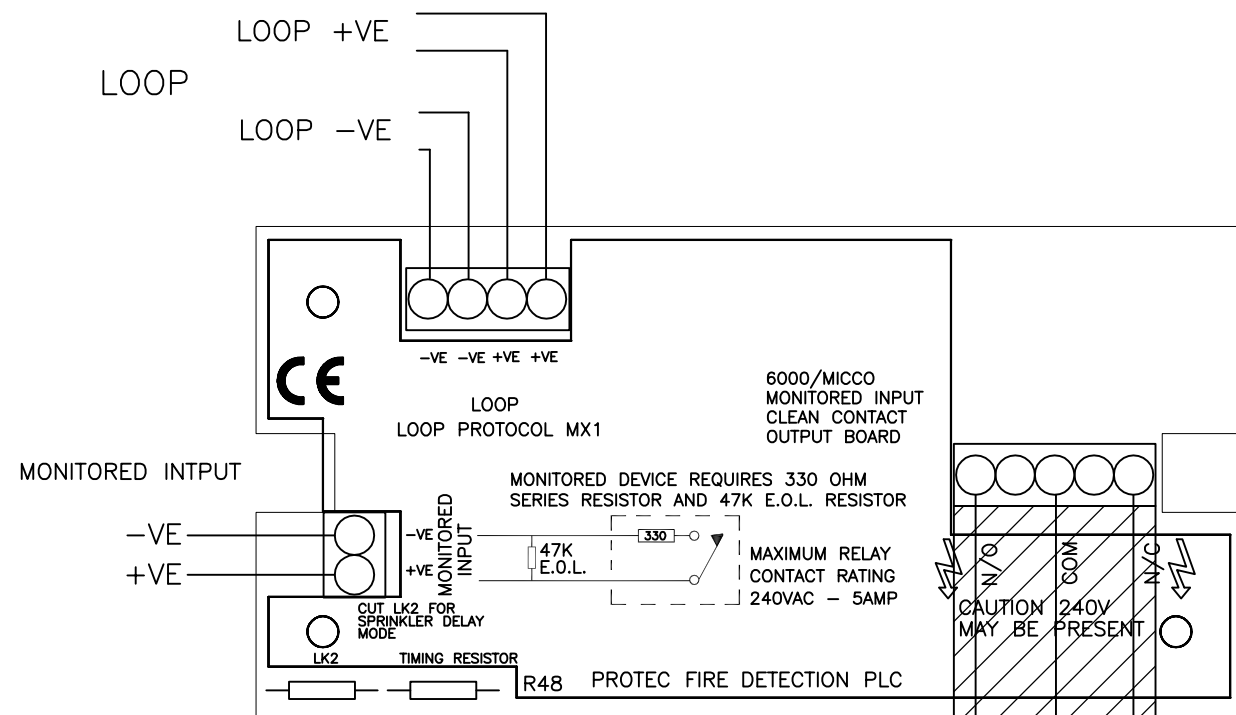
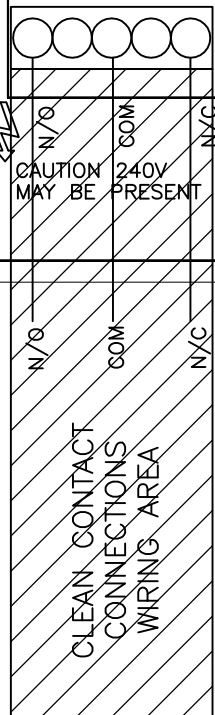



Figure 1 (Delay time versus nearest R48 value)

Time(s)	R48 (kΩ)
1	Zero (link)
2	10
6	47
10	82
14	120(factory fitted)
17	150
20	180
25	220
30	270

PRODUCT VARIANTS	
6000/MICCO	WIRE CHANGE OVER CONTACTS AS REQ'D.
6000/MICCO/240	WIRE CHANGE OVER CONTACTS AS REQD.
6000/MICCO/SDU	CUT LK2 FOR SPRINKLER DELAY. ALTER TIMING RESISTOR R48 IF REQUIRED.



NOTE
 CLEAN CONTACT OUTPUT CONNECTIONS MUST BE KEPT TO A MINIMUM LENGTH AND MUST NOT CROSS PCB. SEE ABOVE DIAGRAM



Protec Fire Detection plc
 Protec House, Churchill Way, Lomeshaye Ind. Est
 Nelson, Lancashire, U.K. BB9 6RT
 Tel (01282) 717171 Fax (01282) 717273

SCALE	DESIGNED		
NTS	DRAWN	S BISCOB	23.11.99
	CHECKED	D R REEVES	23.11.99
	APPROVED	S BROWN	23.11.99
TITLE 6000/MICCO WIRING DIAGRAM FOR MICCO INTERFACE			
CLIENT			

DRAWING No. PID182

JOB No.

ISSUE	0	1	2	3	4						
-------	---	---	---	---	---	--	--	--	--	--	--